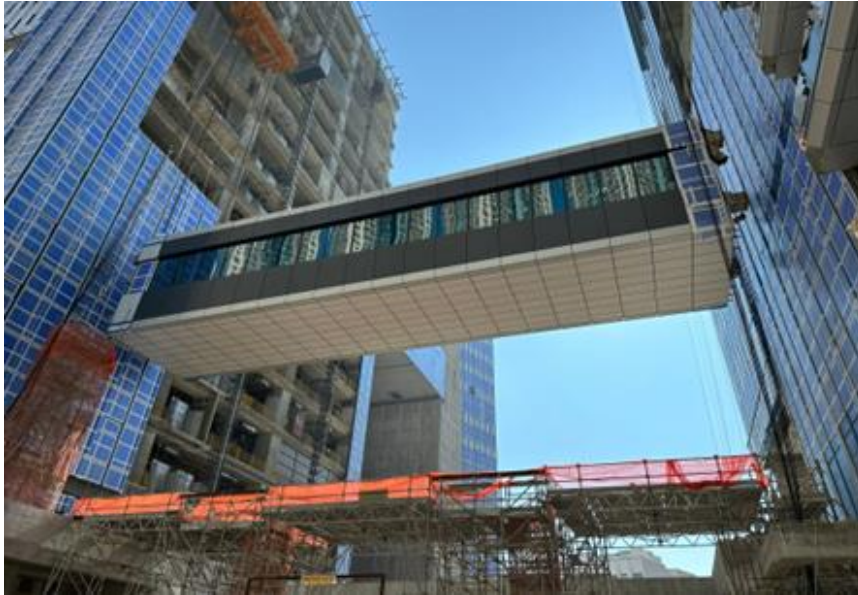


Project Profile: Immigration Headquarters Heavy Lifting Of Link Bridge Between T1 and T2



In February 2022 Harmony Construction Co. Limited were awarded the Contract for the design, supply and operation of heavy lifting operations on a steel truss link bridge at the HK Immigration Headquarters. The works were conducted at Area 67 TKO between buildings T1 and T2. The link bridge had a total weight of 380 Tonnes.

The lifting was carried out in 3-stages lifting the bridge from ground level to eighth floor with a height of approximately 28m.

1st lift : This initially lifted the link bridge 1.5 meters away from the supported scaffolding for installation of, façade units and concreting a bond deck slab

2nd lift : This lifted the bridge from ground to eighth floor level. Once the lift was complete welding was carried out to connect the link bridge truss to the end pieces

3rd lift: This Lowered the link bridge to bearings.

The total operation took 45 working days. However, lifting of link bridge from ground level to 8 floor only took 8 hours to complete.

All lifting was carried out by trained operatives from Harmony Construction Co. Limited.

The heavy lifting equipment supplied by Harmony included the following items:

- 4 sets. HLU120 heavy lifting hydraulic jacks
- 2 nos. HCU Hydraulic pumps
- 1 set of HSCU digital synchronize control unit
- 2 sets of Steel cantilever lifting frames

Heavy Lifting

Heavy Lifting of Link Bridge.

Contract Value

\$HK 1,900,000

Duration

2022-2023

Client

Hong Kong Government

Consultant

HK Government Architectural Department

Main Contractor

Hip Hing Construction Co. Limited

Heavy Lifting Design

Klabella Solutions Ltd.

Heavy Lifting Equipment

Harmony Construction Co. Limited

Heavy Lifting Contractor

Harmony Construction Co. Limited