

Harmony Climbform System

Introduction:

Harmony Climbform system is entirely local design, supply climbform system to suit Hong Kong & Macau standard of requirements, construction practice and safety standard. Harmony climbform designed to construct vertical elements with different form and shape of the core wall. Easy and safe to operate using series of hydraulic super long stroke jacks and floor to floor height can be jacked up to maximum 5 meters in one go (one complete climb).

Our climbform provides:

- 3 layers of unobstructed working platform with safe access.
- Additional hanging platforms possible.
- Reliable hydraulic climbing system suitable for variable lifting heights in one go.
- Lift as one unit or separate internal & externally
- fast and safe lifting.
- 4 days cycle achievable
- Formwork panel can be plywood or steel.










No.2 Murray Road Commercial Development. Year2021

Climbform System Perspective:



Typical 4 Day Cycle Climbform Construction:

DAY ACTIVITY	DAY 1		DAY 2		DAY 3		DAY 4	
	AM	PM	AM	PM	AM	PM	AM	PM
Strike formwork panels and clean and oil formwork								
Activate hydraulic system and lift climbform								
Crane lifted rebars to climbform top deck ready for day 2 rebar fixing								
Rebars fixing and E&M fixing								
Install blackout and partial closing of formwork panels								
Survey check and final inspection check								
Concreting								

Advantage of using climbform:

- ❖ **Cost Effective** – Save time and Money, all formwork can be climbed in one go in a short period of time and no tower crane is required.
- ❖ **Fast Cycle Time** – Using climbform can achieve as fast as 4 days per construction cycle, please refer to typical climbform 4 day cycle for details.
- ❖ **Speed and Efficiency** – Climbform is hydraulically jack up the entire rigid frame carried gangs of formwork panels in one go, climbing time to the next floor can be as short as 1 hour (it depends on floor to floor height).
- ❖ **Safety** – Climbform designed to have 3 layers of working platform, top, middle and lower platforms, it provides a safe environment to workers for easy reach the formwork panels and avoid all unnecessary unsafe climbing up and down. All platform are linked with safe access and is comply with Hong Kong law of safety regulation requirement.
- ❖ **Product Quality** – Climbform gives a good accurate concrete result of all vertical member structures and is flexible to add and deduct any formwork

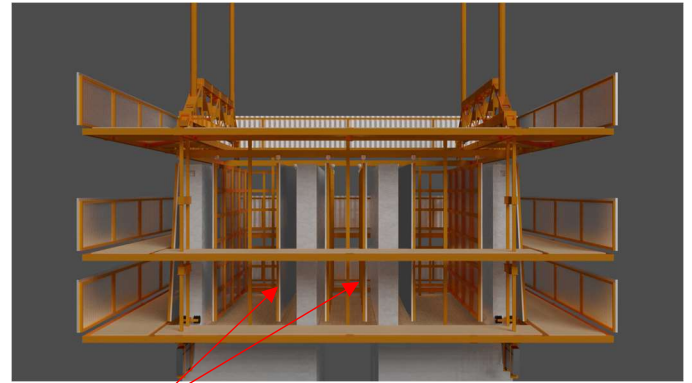
panels to adopt minor changes on some typical floors with non-typical elements.

Schematic Illusration of Climbform 4 Day Constuction Cycle:

Protective fance cladding not shown for clarity

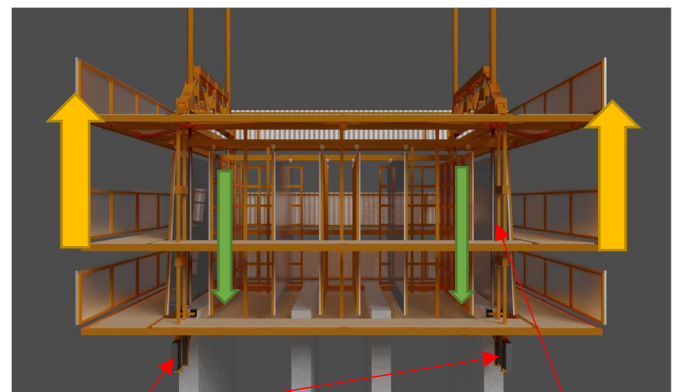
Day 1

**Day 1 after day 4 concreted,
Strick formwork panels, clean
and oil.**



Formwork panels opened, clean & oiled

**When concrete reach the designate
Strength, climbform ready to jack up.
super long stroke jack extended
against the top of wall, seating pin withdrew
from pocket recess. Climbform climbed
to construction floor, seating pin seated into
pocket recess, super long stroke jack retracted.**

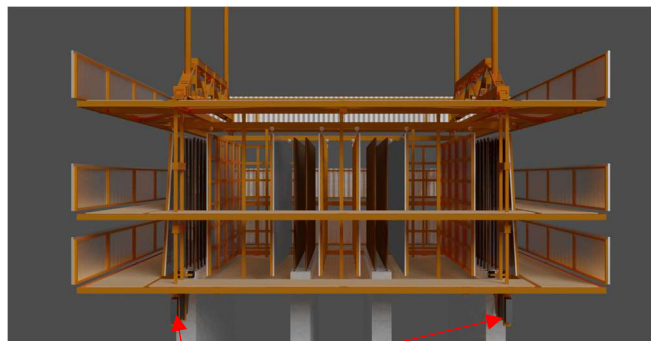


Seating pins withdrew
from pockets recess

Long-stroke jack
extended against
top of the wall

Day 2

**Reinforcement fixing,
Installation of E&M Blockout.**

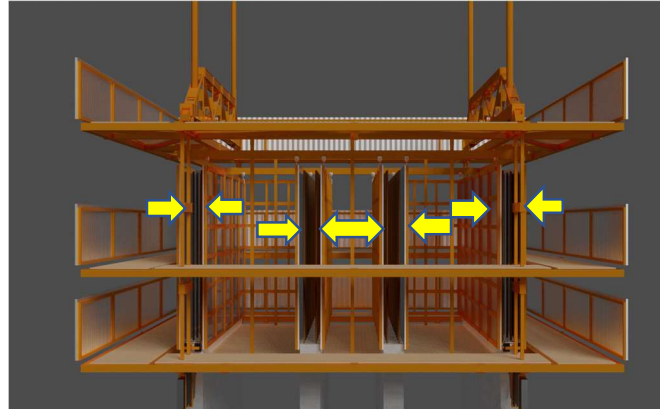


Seating pins seated on pocket recesses

Schematic Illusration of Climbform 4 Day Constuction Cycle: (Continue)

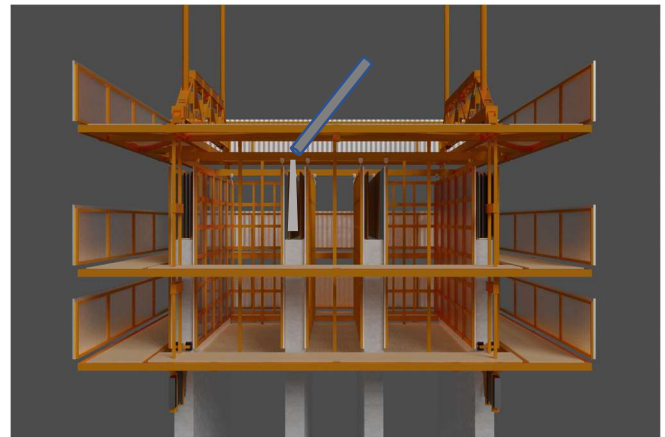
Day 3

Closing formwork panels,
Survey check,
Preparation for concreting



Day 4

Concreting



END

For more information please contact:

Donald Chan or Thomas Cheung

Office: +852 36195436

Mobile: +852 96433030, +852 94730111

donald.chan@harmonyeng.com.hk

thomas.cheung@harmonyeng.com.hk

Website: www.harmonyeng.com.hk

Harmony Construction Co.,Ltd

Unit.2313, 23/F, New Tech Plaza,

34 Tai Yau Street, San Po Kong,

Kowloon,

Hong Kong